

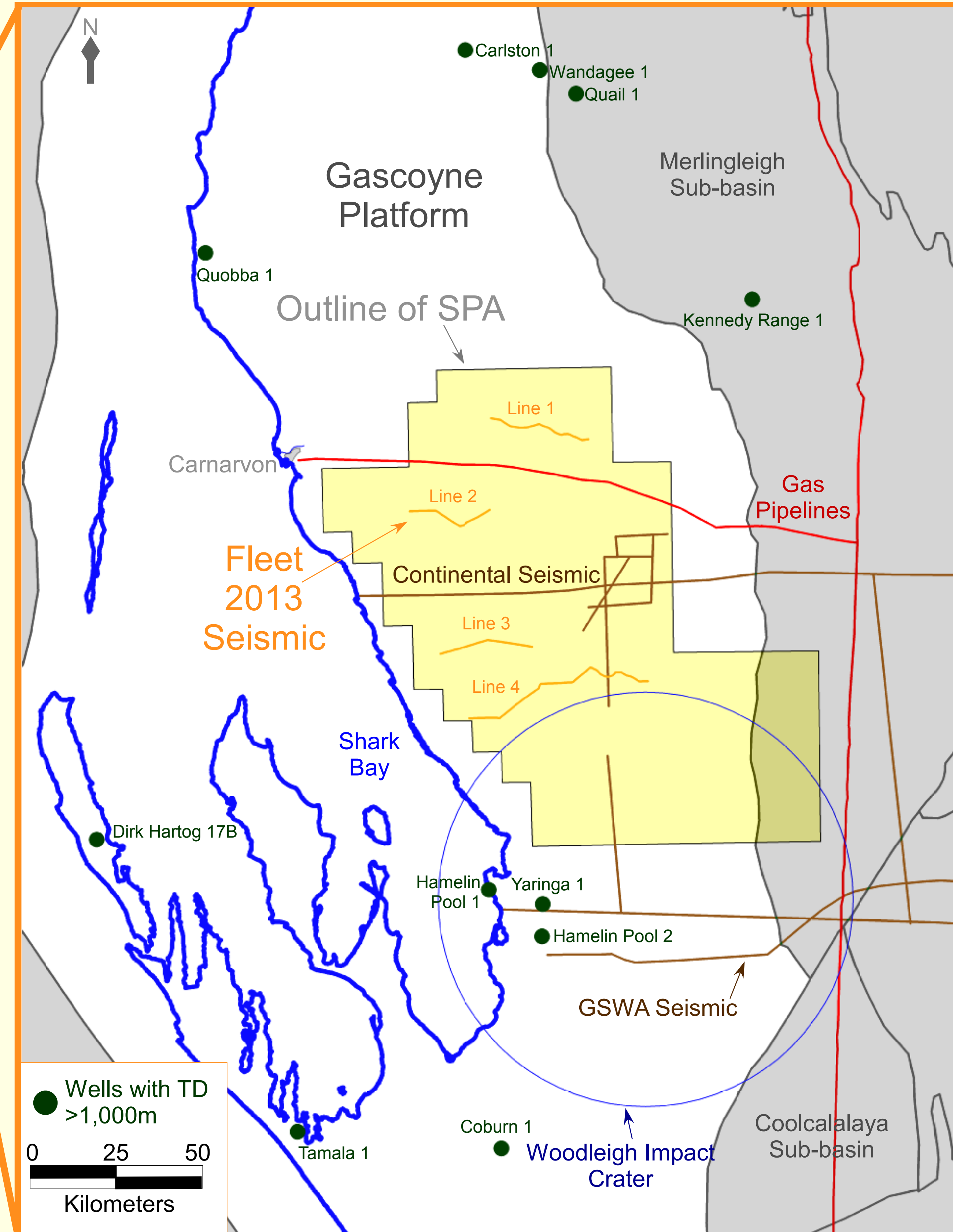


The potential for an unexplored unconventional hydrocarbon play in the southern onshore Carnarvon Basin

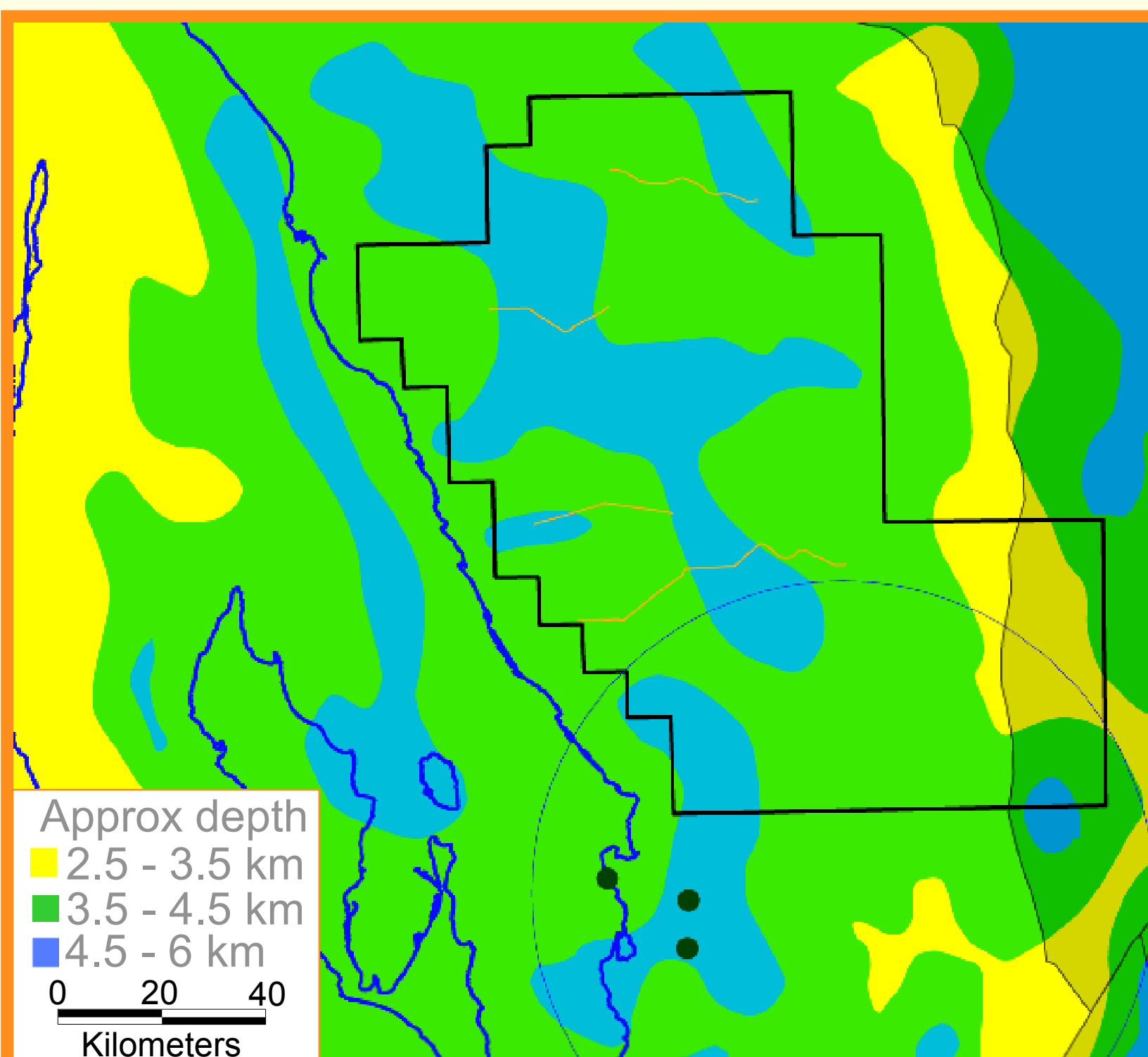
Matthew Silverman¹, David Warner², and Catherine Campbell¹

¹Fleet Resources Pty Ltd, Denver, Colorado, USA and ²DSW Petroleum, Adelaide, SA

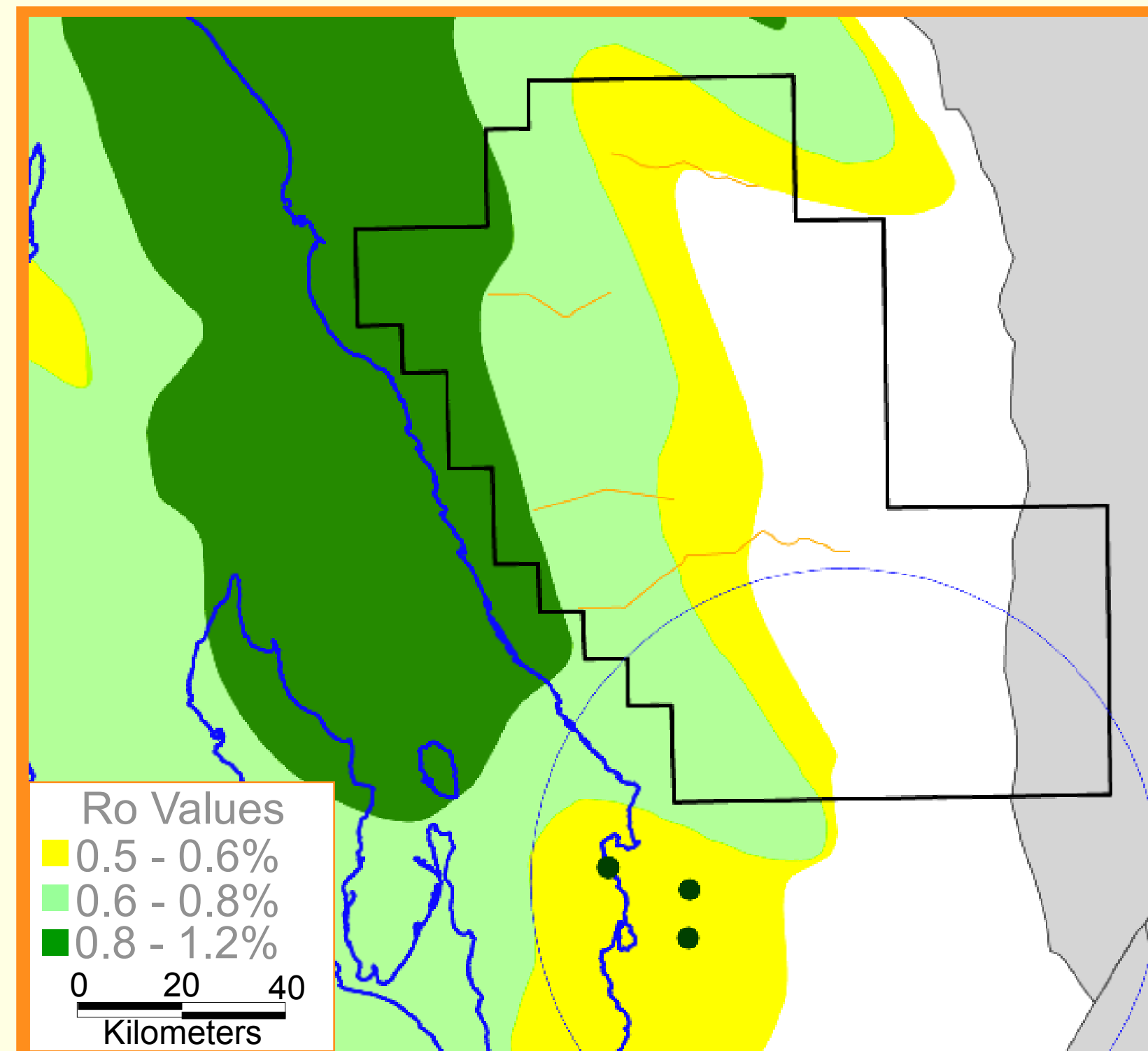
- 12,400 km² Special Prospecting Authority with Acreage Option
- Underexplored area with oil prone, mature source potential in the Devonian and Silurian
- Gas pipelines present in prospect area
- 140 km 2D seismic program recorded in 2013, significant improvement in data quality from previous seismic
- First indications of pre-Tumblagooda sediments
- Thickening in units with source rock and unconventional potential
- Structures indicated on Lines 2 and 4 shown below
- Permit includes northern rim of the prospective Woodleigh impact crater



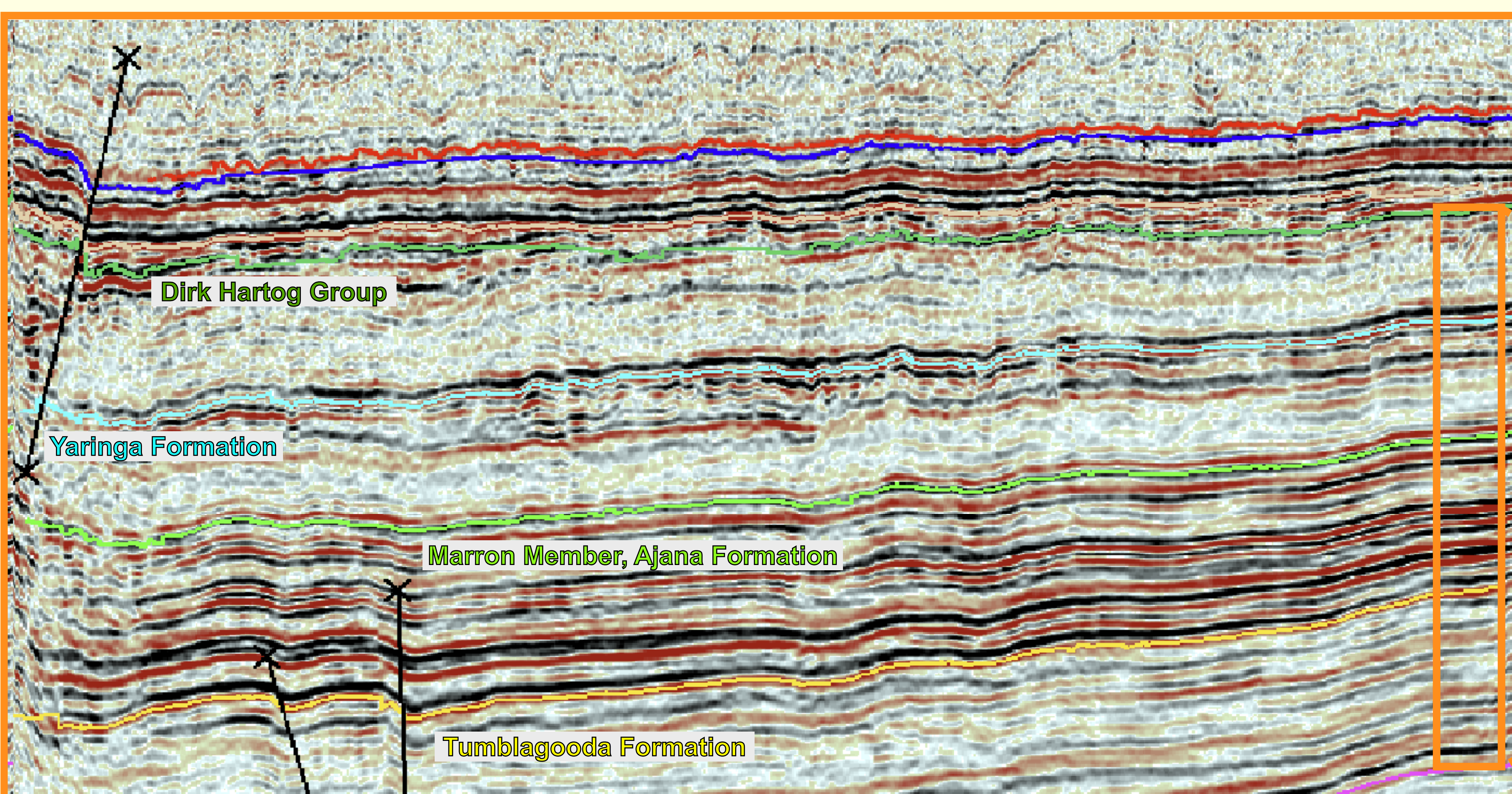
Location map of the SPA area



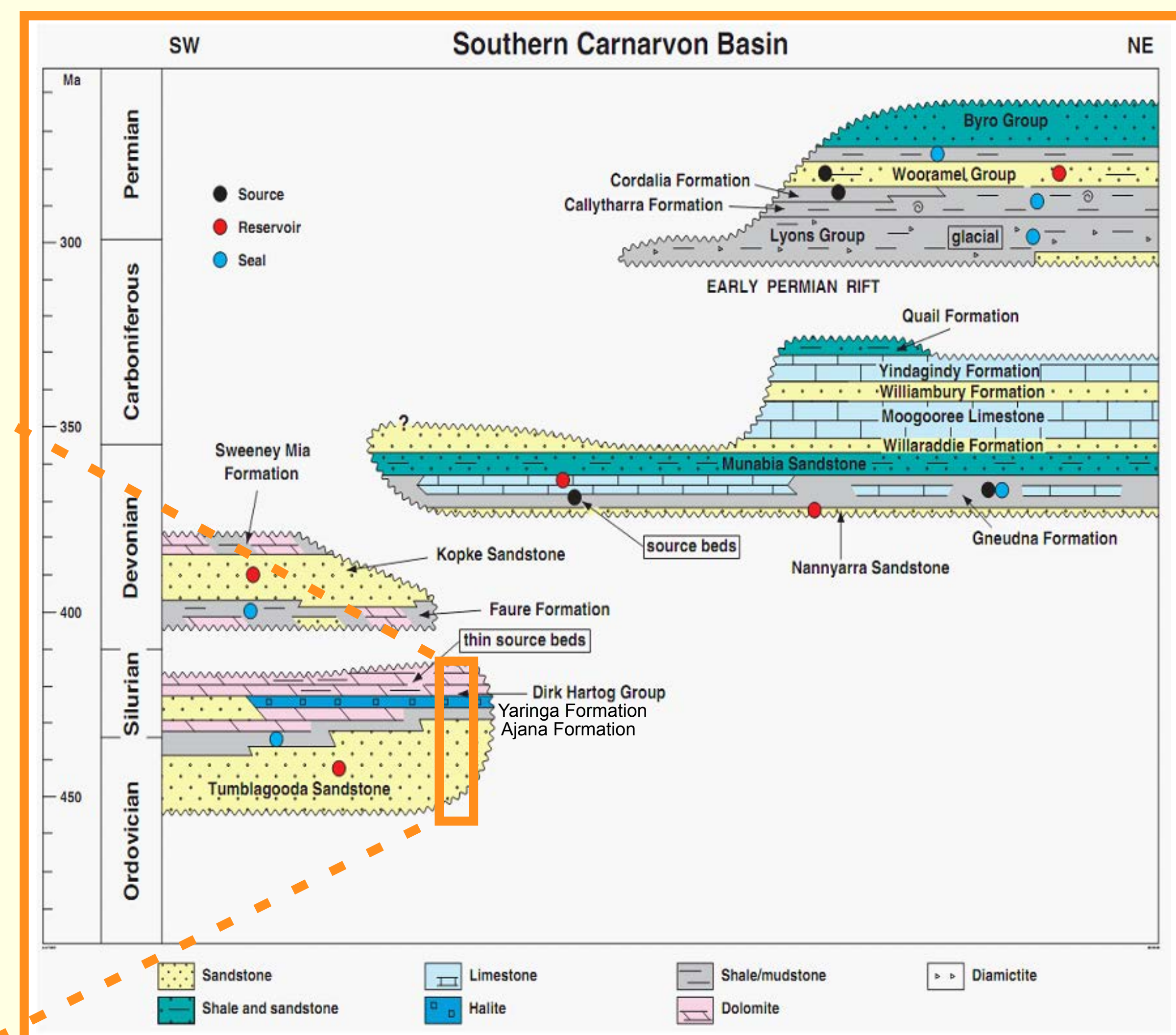
Depth to basement (modified from Lockwood and D'Ercole)



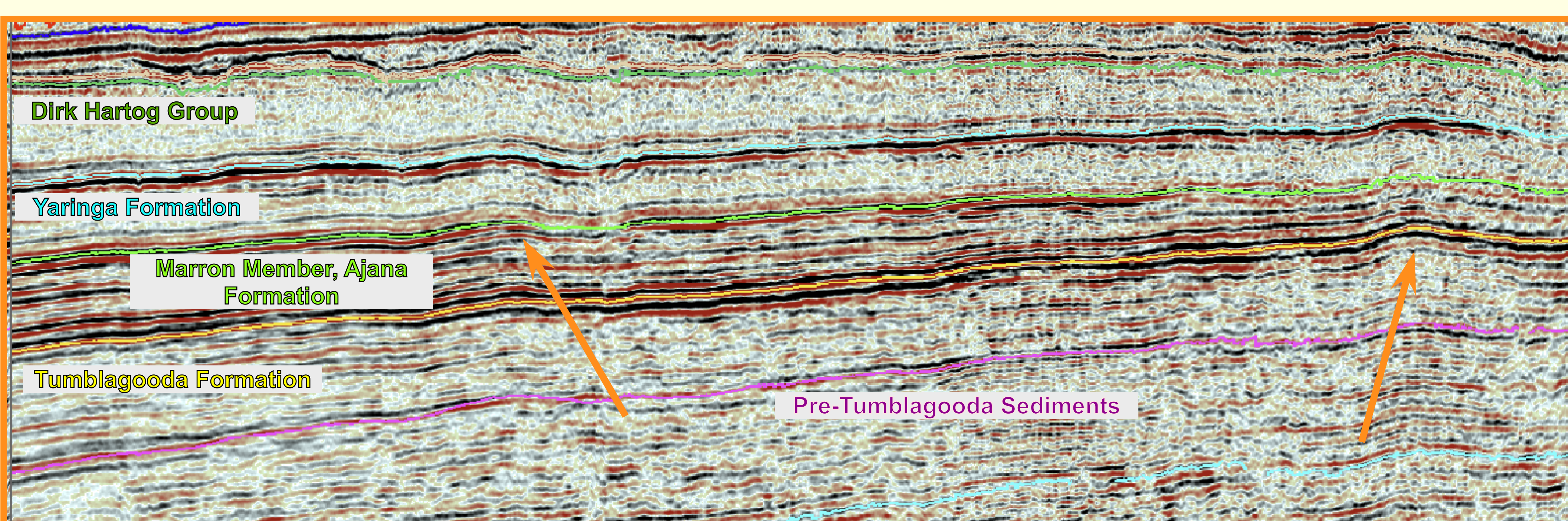
Silurian Ro (modified from lasky et al)



Seismic Line 2 as shown in location map. Note structure on west extent of the line.



Stratigraphic column of the Southern Carnarvon Basin (GSA, 2011 Summary of Petroleum Prospectivity)



Seismic Line 4 as shown on location map. Note anticlinal structures marked by arrows.

For additional information contact:

Matt Silverman
Fleet Resources Pty Ltd

621 17th Street, Suite 2300
Denver, CO 80293
United States

Office: +1 303 382 0910
Mobile: +1 303 915 4518

email: msilverman@bayless-cos.com