

Paradigm New Product Release – Geolog 6.4.2

Geolog 6.4.2, the latest release from Paradigm, offers some new modules as well as adding capability to existing features:

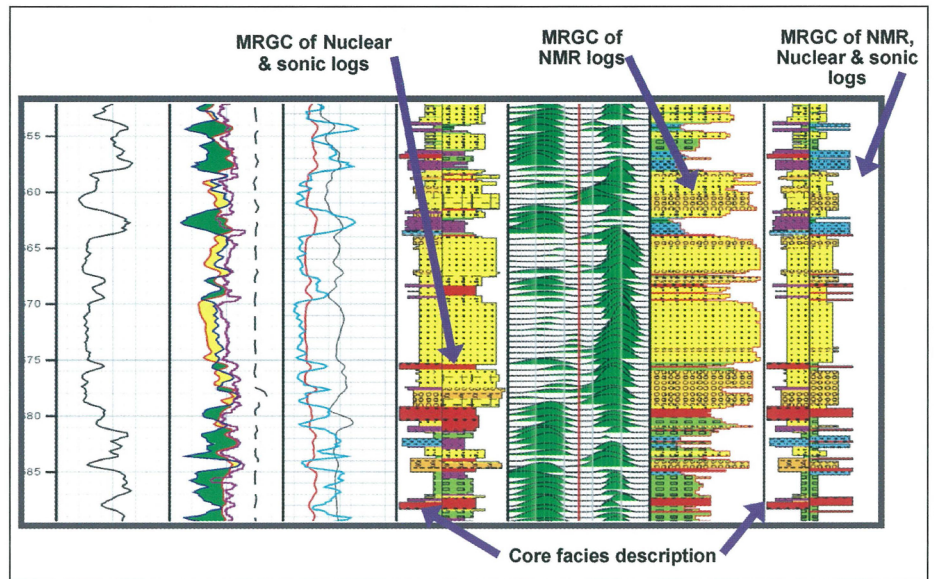
NMR module, which is designed for use in the quality control, processing, interpretation and modelling of NMR logs and benefits from the results of technical collaboration between Paradigm and NMR experts within oil companies.

Facimage is a suite of routines for electro-facies analysis and core data modelling which, in Geolog 6.4.2, makes TotalFinaElf's Multi-Resolution Graph-based Clustering (MRGC) algorithm generally available for the first time.

Geomage provides the ability to process borehole image logs within the Geolog environment and thus maximise the value of the information these logs provide by offering an integrated environment, allowing both geoscientists and petrophysicists to access each other's log data.

GeoFrame Well Data Server (WDS)

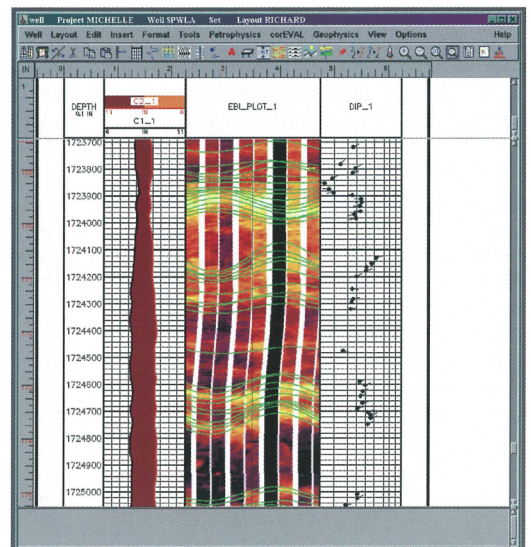
The GeoFrame WDS represents the latest addition to the Paradigm WDS family and follows in the same vein as the gOcad and OpenWorks WDS initially deployed with Geolog 6.4.1. These Well Data Servers allow Geolog's best in class petrophysical applications to directly access data stored in third party databases without the need for file copying or any data duplication.



Facimage: MRGC Electrofacies.

Paradigm Name Service V2 (PNS V2)

The PNS is central to the new mode of operation introduced in Geolog 6.4 as it is the means by which Geolog is able to locate projects across multiple servers and databases. It has changed from being a purely Geolog utility towards one which will offer access to Paradigm's other products.



Geomage.