

Paradigm Announces The Release Of Sysdrill DirectorGeo

Combines the well planning features of Sysdrill Director with the dynamic interpretation and visualisation capabilities of VoxelGeo.

Paradigm Geophysical Ltd. has announced the release of its innovative directional well planning and survey management system, DirectorGeo™. This new software package is fully integrated with VoxelGeo™, the company's volume-based interpretation and visualisation system.

Together, they allow drilling engineers and interpreters to work in a multi-disciplinary team for geological target selection, well planning and optimal wellpath positioning in a 3D visualisation environment.

Using VoxelGeo's tools, prospects can be selected from multiple seismic volumes, interpreted geological surfaces or automatically extracted geobodies. After the well planning is performed using DirectorGeo, the computed planned wellpath is dynamically visualised in VoxelGeo, showing driller's targets, wellpath positional uncertainty, casings, comments and any relevant drilled wellpaths identified with the integrated anti-collision analysis. Pore and fracture volumes can be loaded to extract predicted down hole pressures for use in

casing seat and mud program selection. Wellpath data is stored in the drilling relational database for further engineering and drillability analysis, using Paradigm's suite of integrated drilling engineering applications.

During the operational phase, downhole MWD directional survey data can be entered into DirectorGeo. The actual wellpath and its expected positional uncertainty can be visualised in VoxelGeo and viewed relative to the planned wellpath and its geological targets. The DirectorGeo Project Ahead system can then be used to plan ahead of the bit to ensure that the well is positioned accurately in the reservoir.

The unique DirectorGeo workflow allows for optimal wellbore placement and reduced well planning cycle time, due to its tight integration of geologic interpretation with well engineering.

John Wearing, Senior Vice-President Solutions Marketing at Paradigm stated, "Industry experts are predicting that new drilling solutions, combined with high-end visualisation and real-time controls, will yield significant savings in annual drilling costs. Our combined product offerings present an opportunity for us to enter a large new market, working with drilling contractors and the drilling departments of oil and gas exploration and production companies."

DirectorGeo is available on Windows, and VoxelGeo is available on Windows, Sun and SGI platforms.

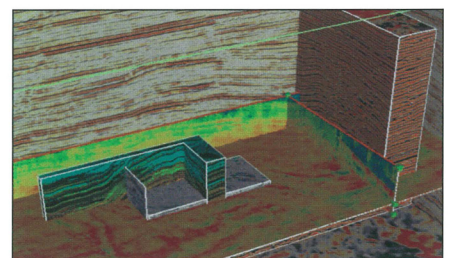


Fig. 1. Multi attribute visualisation in Reservoir Navigator.

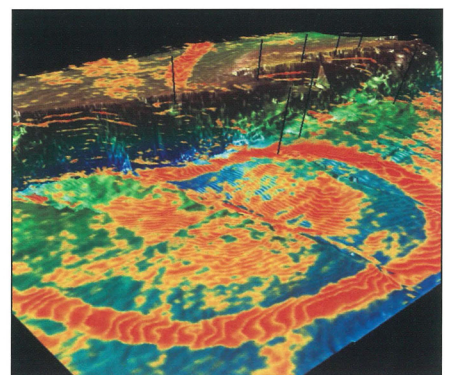


Fig. 2. Integrated volume visualisation of channel system.