

New Paradigm Release

Paradigm Geophysical has released the newest version of its Stratimagic™ integrated interpretation solution for reservoir characterisation, Stratimagic 2.0.

The latest release offers a direct link to VoxelGeo, the multi-volume visualisation and interpretation solution, allowing classified maps and volumes, well information and horizon attributes from Stratimagic to be analysed directly in VoxelGeo without workflow disruptions, enabling the quantification of classified geobodies using statistical calculations for reserves estimation.

Stratimagic 2.0 integrates the latest versions of Paradigm's other software modules.

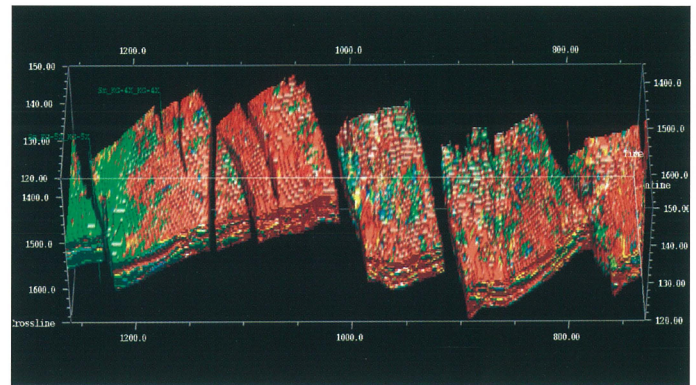
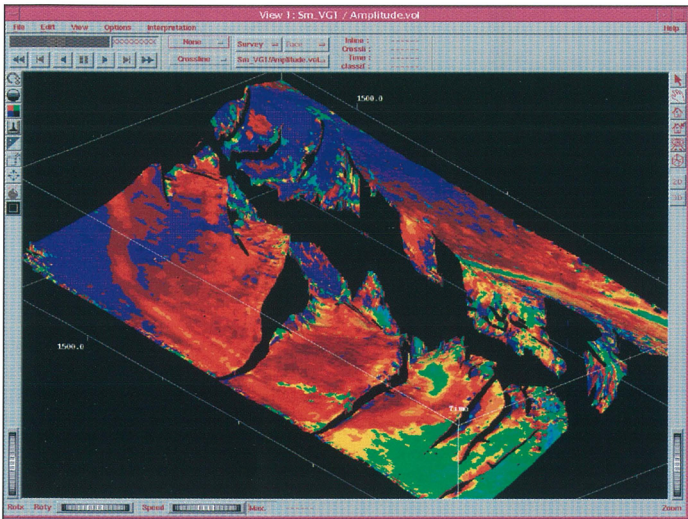
As a result of the new release, Stratimagic now offers a fully integrated solution for multi-attribute classification applied to variable, as well as constant time/depth intervals. The new multi-attribute classification process on non-constant intervals can provide a more detailed description of the reservoir, resulting in better informed business decisions.

The CorSer technology has been expanded in this release to include direct write back of

facies classification maps to designated third-party databases, eliminating the need for time consuming data import/export.

In addition, Stratimagic 2.0 can access previously generated well groups from third-party databases, taking immediate advantage of existing interpretation.

Other enhancements include the elimination of the 2GB limitation in file size, Tobin cultural file support, and improvements in accessing remote databases.



Above: SeisFacies Class volumes exported to VoxelGeo.

Left: Stratimagic class maps displayed in VoxelGeo.