

## Petroleum Exploration Land Release In Queensland's Frontier Basins

The Queensland government recently made available 150,000 km<sup>2</sup> of land for petroleum exploration, demonstrating its significant commitment to encouraging petroleum exploration within the state.

On 4 April 2007, Mines and Energy Minister Geoff Wilson announced the gazettal of the land for competitive tendering for petroleum exploration within the Adavale, Georgina, Cooper–Eromanga, Bowen–Surat and Clarence–Moreton basins.

A total of 41 areas is available for exploration under two separate calls for tenders, dependent on whether a native title process is required prior to grant or not. Areas in Call for Tenders LR2007-1 have less than 25% non-exclusive possession land and will proceed to grant without a native title process. Areas within Call for Tenders LR2007-2 have greater than 25% non-exclusive possession land and will require a native title process prior to any grant.

### Under-explored Adavale and Georgina basins

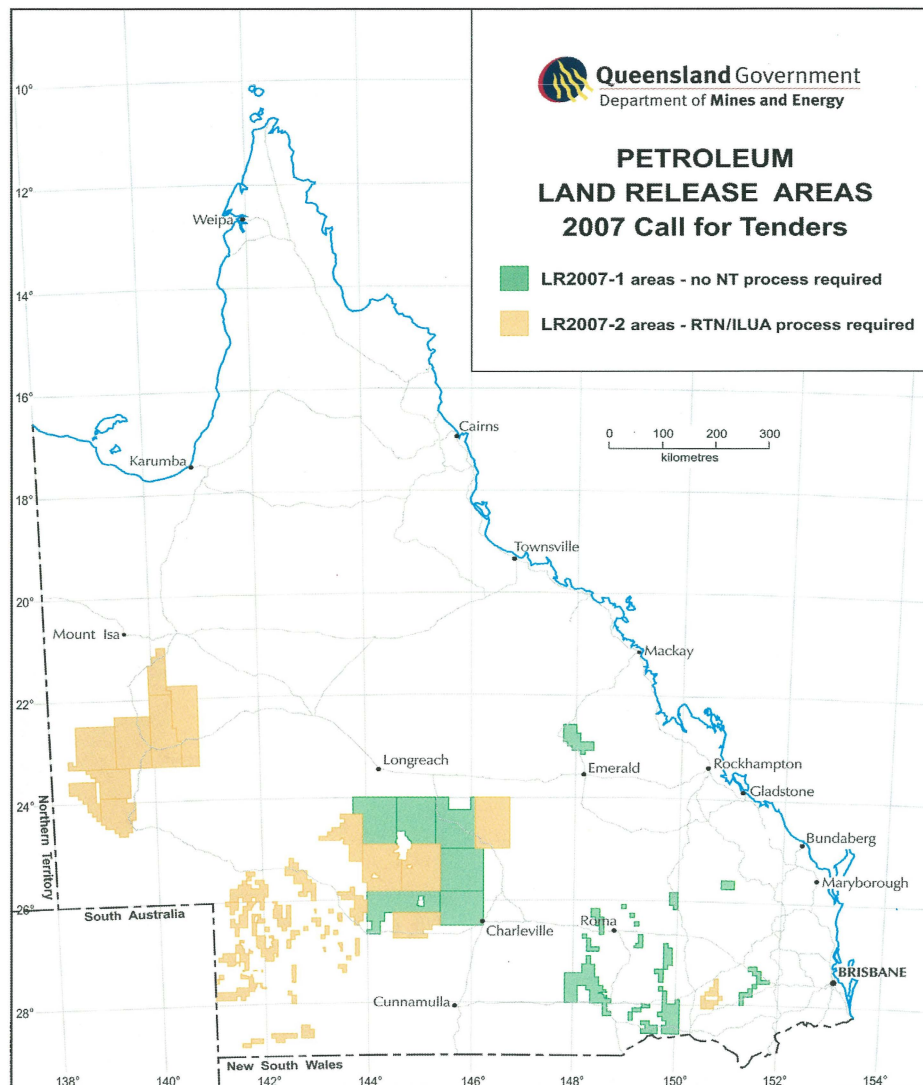
A feature of the 2007 Call for Tenders is the release of under-explored areas within the Adavale and Georgina basins. These basins, located in central and western Queensland, are considered frontier areas within the state and highly prospective for economic discoveries. Both basins contain elements of potentially economic oil and gas systems and a variety of exploration targets.

The Adavale Basin is a structurally complex Devonian aged basin containing fluvialite, deltaic, marine and evaporite deposits. Commercial production from the Gilmore gas field proved hydrocarbon generation and accumulation has taken place, indicating additional accumulations elsewhere in the basin are likely. The presence of oil in PPC Gilmore-2 demonstrated the possibility of oil accumulations in this basin.

Despite a number of oil and gas shows, the Georgina Basin has only received cursory exploration. A significant gas flow from the AOD Ethabuka-1 well drilled in 1974 proved hydrocarbons have accumulated and indicates a potential for further discoveries in the basin. Previous studies have shown that traps, reservoirs and seals are present. Proximity to the Ballera to Mount Isa pipeline should assist with the commercialisation of any gas discoveries in this basin.

### Conventional opportunities in the Cooper–Eromanga basins

The Cooper and Eromanga basins contain many important producing oil and conventional



A total of 41 areas is available for exploration under two separate calls for tenders, dependent on whether a native title process is required prior to grant or not

gas fields and have potential for additional discoveries. Areas released within the Cooper and Eromanga basins are in an area of mature Permian source rocks and are considered to be prospective for conventional petroleum. The areas have a good regional seismic coverage with some drilling. Potential exists for additional targets to be defined.

### Conventional and coal seam gas in the Bowen–Surat basins

The Bowen and Surat basins are prospective for conventional petroleum and coal seam gas. Coal seam gas targets are present in both the Permian coal deposits of the Bowen Basin and the Jurassic Walloon Coal Measures of the Surat Basin. The areas gazetted offer a variety of exploration opportunities with both conventional and coal seam gas targets being present.

### Coal seam gas in the Clarence–Moreton Basin

One area is located in the western Clarence–Moreton Basin overlying the Walloon Coal Measures. Its coal seam gas potential is still to be tested.

### Call for Tenders details

The 2007 Petroleum Call for Tenders closes at 4.30 pm on Monday 27 August 2007. Tenders must be lodged at the Department of Mines and Energy Service Centre, Podium 2, Landcentre, Corner Main and Vulture Streets, Woolloongabba, Queensland.

Additional information on the areas available in the Queensland 2007 Call for Tenders is available at: [www.nrw.qld.gov.au/mines/petroleum\\_gas/call\\_tenders\\_pg.html](http://www.nrw.qld.gov.au/mines/petroleum_gas/call_tenders_pg.html). Email enquiries can be directed to [petroleum@dme.qld.gov.au](mailto:petroleum@dme.qld.gov.au) ■