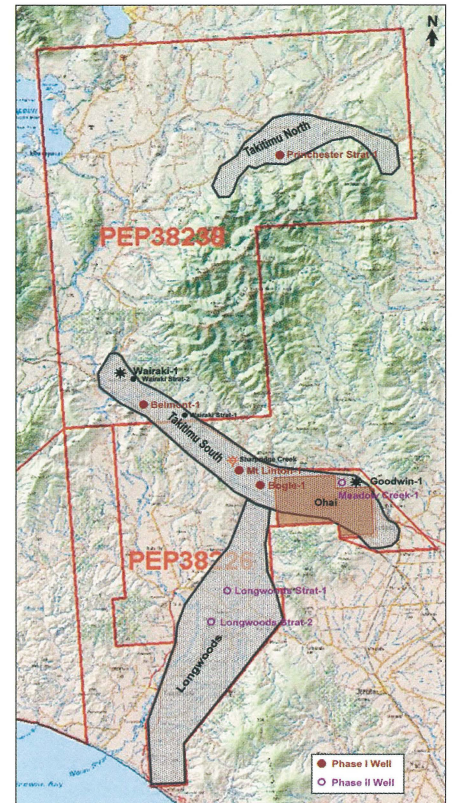


## L&M Petroleum Commences 2009 Drilling Programme



Petroleum exploration permits 38226 and 38238.

New Zealand's L&M Petroleum is set to spud the first well of its 2009 drilling programme this week in the offshore Western Southland Basin on New Zealand's South Island.

The Bogle-1 well will further evaluate the Beaumont formation coals previously encountered in the Goodwin-1 and Wairaki-1 wells and will test the deeper, more gas rich, Morley coals. Upon completion of the Bogle-1 well, the rig will be moved to drill the Mt Linton-1 and Belmont-1 wells back-to-back.

The 2009 coalbed methane gas drill programme will see a further four wells drilled this year. ■

another 4,000 km that will be made available to explorers on a non-exclusive basis by the acquisition company", Brownlee said.

The survey is being performed by CGG Veritas Services SA aboard the *MV Pacific Titan*. The acquisition is expected to take about 30–40 days. ■